



## A LEADING BOUTIQUE TRUST COMPANY

### WHO WE ARE

Rhone is an international group providing succession planning structures through its offices in Geneva (Switzerland), Nassau (The Bahamas), Singapore, the Principality of Monaco and Hong Kong, as well as its managed trust company in Prince Edward Island (Canada).

Our mission is to create tailor-made and innovative solutions founded on sound expertise and a disciplined approach.

We have close to 70 experienced staff who have been carefully recruited for their qualifications and discretion. They draw on decades of experience of providing services of the highest caliber to clients from all over the world.

### WHERE WE COME FROM

Rhone's 30-year heritage stems from being a part of the Pictet Group, a Geneva-based financial institution which is one of the leading independent wealth and asset managers in Europe.

### WHAT DISTINGUISHES US

We manage a relatively small number of structures with total assets in excess of CHF 35 billion.

Together with a professional indemnity insurance cover of CHF 100 million, this provides Rhone with financial stability that distinguishes us from our competitors.

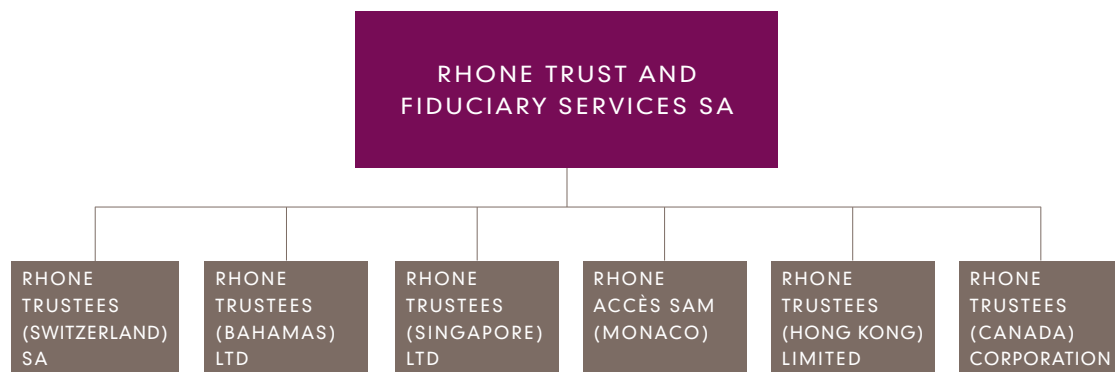
Many trustees are only equipped or prepared to act as trustees of investment portfolios. However, Rhone has experience in dealing with assets of a complex nature, including family business assets, trading companies and commercial or private real estate holdings.

Our clients can also count on the exceptional competence of Rhone's non-executive board members: David Wallace Wilson, Edgar Brandt and Mark Buzzoni, private client advisers of the highest regard who provide oversight and guidance on Rhone's activities.

Rhone is audited worldwide by Deloitte and locally regulated by The Monetary Authority of Singapore, The Central Bank of The Bahamas and The Hong Kong Companies Registry.

For more information, please visit our website [rhoneservices.com](http://rhoneservices.com)

## ORGANISATION



## PARTNERS

...



ALEXANDRE  
SEMBOGLOU  
*Nassau*



NICHOLAS  
PELL  
*Geneva*



ANTONIO  
RIBEIRO  
*Singapore*



MARK  
RICHFORD  
*Nassau*

Rhone is fully owned by a management team composed of Alexandre Semoglou, Mark Richford, Antonio Ribeiro and Nicholas Pell. The absence of external investors, such as private equity, is a guarantee of Rhone's independence.

---

## BOARD OF DIRECTORS

...



ALEXANDRE  
SEMBOGLOU

*Chairman of the Board of  
Directors and CEO*



EDGAR  
BRANDT

*Non-Executive Director  
Edgar Brandt Advisory SA*



MARK  
BUZZONI

*Non-Executive Director  
Partner at Taylor Wessing LLP*



DAVID WALLACE  
WILSON

*Non-Executive Director  
Partner at Schellenberg Wittmer Ltd*

The board of Directors has the oversight of the vision and core values of Rhone and has the responsibility for delivering sustainable shareholder value within a framework of prudent and effective controls

---

## MANAGING DIRECTORS

...



CELENE  
KOH

*Singapore*



ANDREW  
MCCALLUM

*Geneva*



CAROLE  
RICHARD

*Monaco*



KIMBERLY  
STRACHAN

*Nassau*

Close to 70 highly-experienced practitioners, representing more than twenty different nationalities, work in Rhone supervised by a team of MDs that manage each office to the highest standards.