



A LEADING BOUTIQUE TRUST COMPANY

WHO WE ARE

Rhone is an international group providing succession planning structures through its offices in Geneva (Switzerland), Nassau (The Bahamas), Singapore, the Principality of Monaco and Hong Kong, as well as its managed trust company in Prince Edward Island (Canada).

Our mission is to create tailor-made and innovative solutions founded on sound expertise and a disciplined approach.

We have close to 70 experienced staff who have been carefully recruited for their qualifications and discretion. They draw on decades of experience of providing services of the highest caliber to clients from all over the world.

WHERE WE COME FROM

Rhone's 30-year heritage stems from being a part of the Pictet Group, a Geneva-based financial institution which is one of the leading independent wealth and asset managers in Europe.

WHAT DISTINGUISHES US

We manage a relatively small number of structures with total assets in excess of CHF 35 billion. Together with a professional indemnity insurance cover of CHF 100 million, this provides Rhone with financial stability that distinguishes us from our competitors.

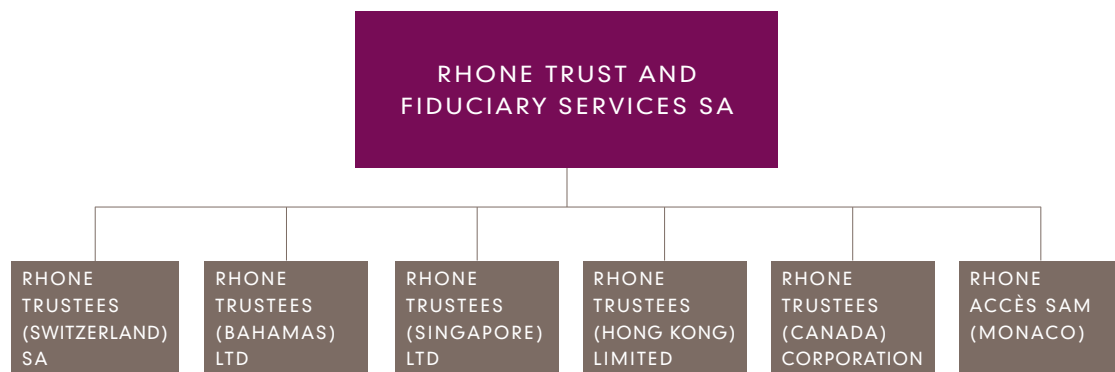
Many trustees are only equipped or prepared to act as trustees of investment portfolios. However, Rhone has experience in dealing with assets of a complex nature, including family business assets, trading companies and commercial or private real estate holdings.

Our clients can also count on the exceptional competence of Rhone's non-executive board members: David Wallace Wilson, Edgar Brandt and Mark Buzzoni, private client advisers of the highest regard who provide oversight and guidance on Rhone's activities.

Rhone is audited worldwide by Deloitte and locally regulated by The Monetary Authority of Singapore and by The Central Bank of The Bahamas.

For more information, please visit our website rhoneservices.com

ORGANISATION



PARTNERS

...



ALEXANDRE
SEMBOGLOU



NICHOLAS
PELL



ANTONIO
RIBEIRO



MARK
RICHFORD

Rhone is fully owned by a management team composed of Alexandre Semboглу, Mark Richford, Antonio Ribeiro and Nicholas Pell. The absence of external investors, such as private equity, is a guarantee of Rhone's independence.

BOARD OF DIRECTORS

...



ALEXANDRE
SEMBOGLOU

*Chairman of the Board of
Directors and CEO*



EDGAR
BRANDT

*Non-Executive Director
Edgar Brandt Advisory SA*



MARK
BUZZONI

*Non-Executive Director Partner
at Taylor Wessing LLP*



DAVID WALLACE
WILSON

*Non-Executive Director Partner
at Schellenberg Wittmer Ltd*

The board of Directors has the oversight of the vision and core values of Rhone and has the responsibility for delivering sustainable shareholder value within a framework of prudent and effective controls

MANAGING DIRECTORS

...



CELENE
KOH
Singapore



ANDREW
MCCALLUM
Geneva



CAROLE
RICHARD
Monaco



KIMBERLY
STRACHAN
Nassau